



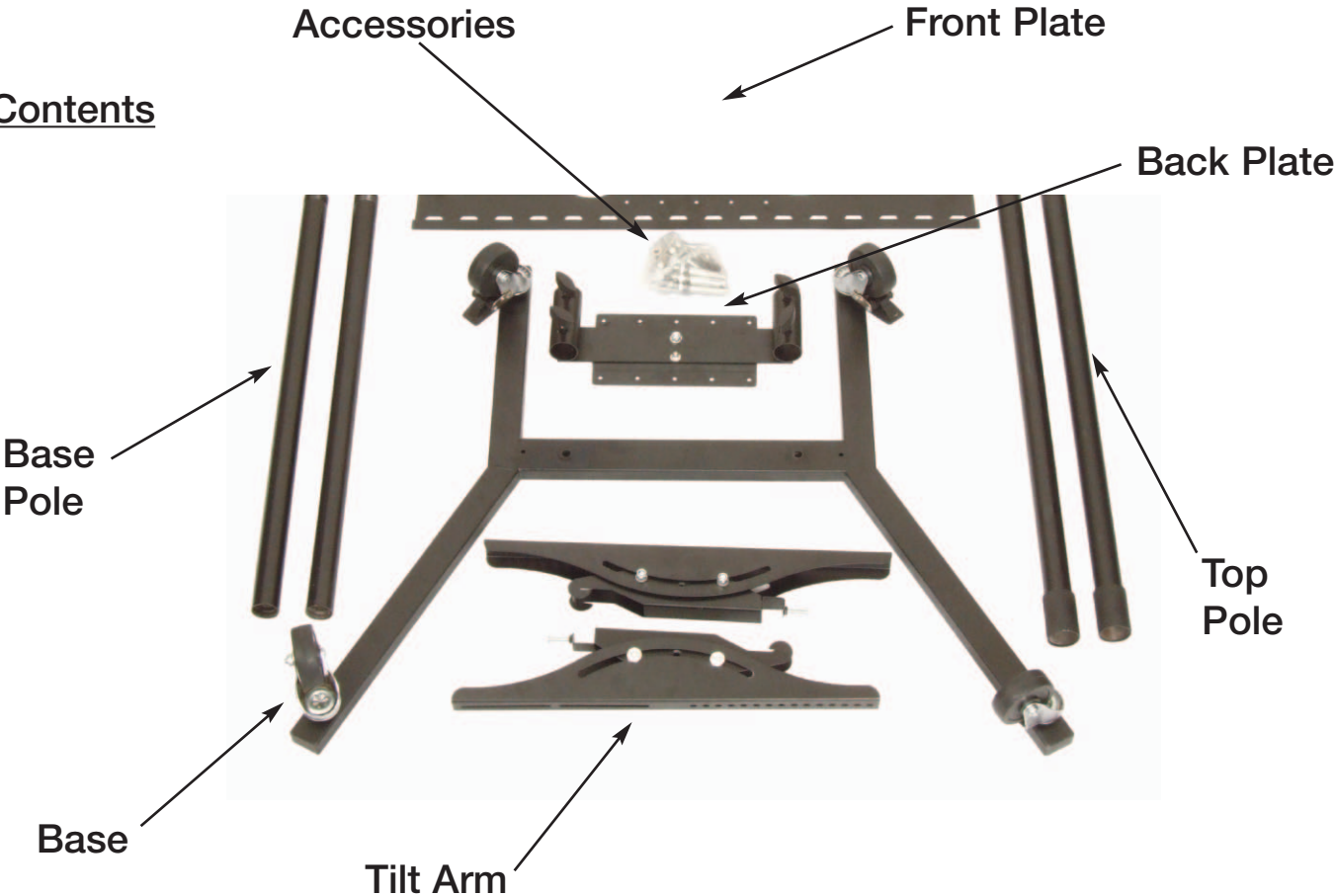
A175CT

Plasma Stand assembly and fitting instructions.



This is a professional product and is intended for installation by qualified personnel only. These instructions are intended to be as comprehensive as possible but at all times it is the responsibility of the user/installer to ensure that the bracket and screen are securely fitted.

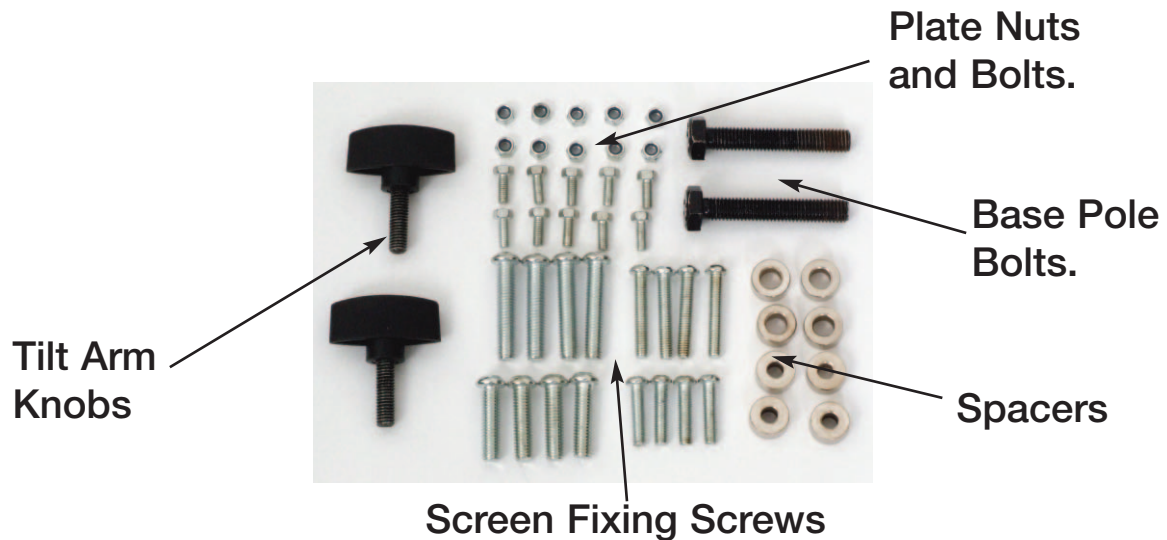
Contents



This file is available to view and download as a PDF at www.electrovision.co.uk. Sight impaired customers can use a free PDF Reader (such as adobe.com/reader) to zoom in and increase the text size for improved readability.

Fitting Instructions

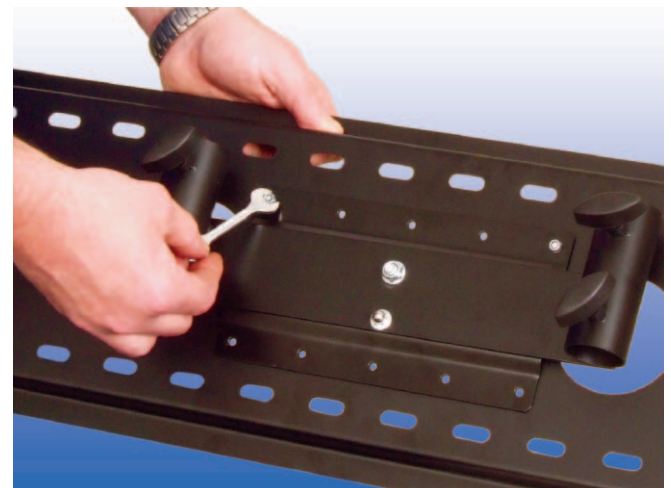
1. Open Accessories pack. In this pack are included 2 x knobs for tilt brackets, 10 x plate nuts and bolts, 2 x base pole bolts, 4 x 4 screw screen fixing screws, 2 x 4 spacers.



2. Fit Knobs to tilt arms.



2. Fit back plate to front plate using the 10 screws and nuts with integral nylon washers provided. You should check that all nuts are securely tightened.



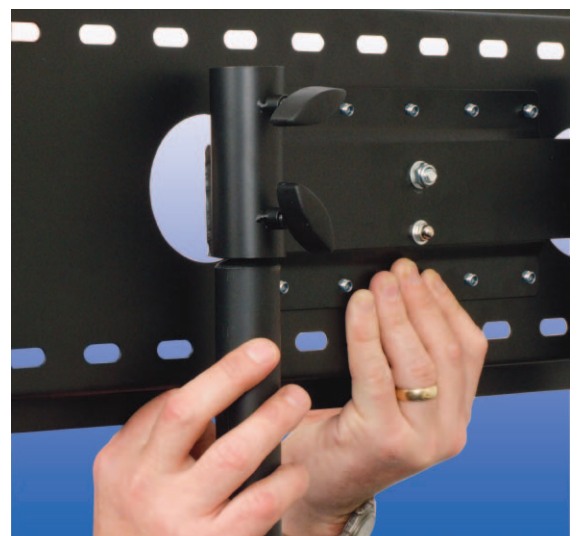
3. Attach base poles to base using bolts provided.



4. Screw on and tighten top pole to base poles

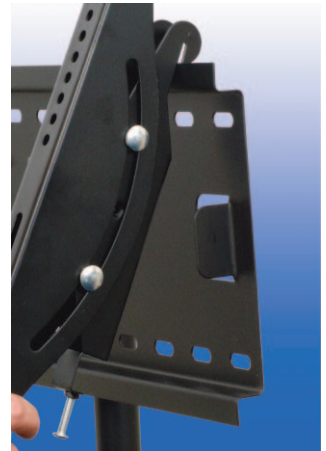


5. Lower the Base/Front plate unit onto the top poles, tightening the 4 knobs when the correct height is set. **DO NOT** try to adjust the height with a TV screen attached.



6. Attach the tilt brackets to the rear of the your LCD/ Plasma television using any of the appropriate fixing screws and spacers supplied. In the bag there are 4 types of fixing screw and 2 types of spacer, the type of bolt and spacer required will be determined by the fixings on the back of the plasma / LCD screen.

7. Hang television on plate using hooks on tilt brackets. DO NOT try to lift heavy items on your own. If needed get help to do this.



8. Tighten screws on the bottom of the tilt bracket to secure the television in place. Adjust angle to desired position and tighten thumbscrew.



9. Check all screws and fittings regularly to ensure correct and safe installation. If you wish to alter the height of the Plasma screen then it should be removed from the stand first.

Electrovision Ltd
Lancots Lane
Sutton Oak
St Helens
WA9 3EX
UK

Tel : +44 (0)1744 745000
Fax : +44 (0)1744 745001

web - www.electrovision.co.uk
e-mail - sales@electrovision.co.uk